

Do 50% of IP Networks run v6 ?

Hurricane Electric
IPv6 Native Backbone – Massive Peering!

FLIP6

LACNIC XV

Cancun – 16th May 2011

Martin J. Levy, Director IPv6 Strategy
Hurricane Electric

Percentages and IPv6

- IPv6 is all about percentages
 - Percentages of traffic
 - Percentages of this/that/the-other



Waiting for IPv6? – The 10% number is reached!

<http://bgp.he.net/ipv6-progress-report.cgi>

Networks Running IPv6

We can measure the percentage of networks running IPv6 by comparing the set of ASes in the IPv6 routing table to those in the combined set of IPv4 and IPv6. IPv4 and IPv6 RIBs Last Parsed: Tue May 3 00:58:51 PDT 2011

IPv4 ASes: 37642

IPv6 ASes: 3758

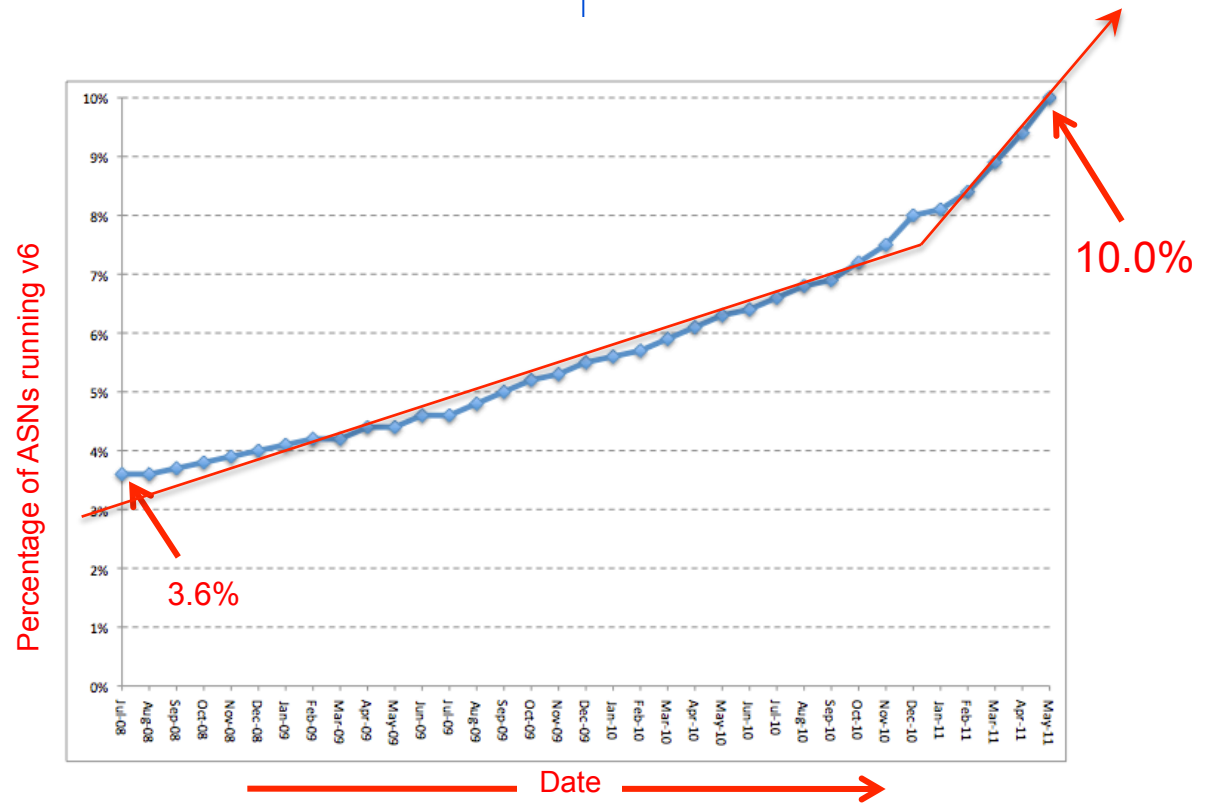
ASes using only IPv4: 33969

ASes using only IPv6: 85

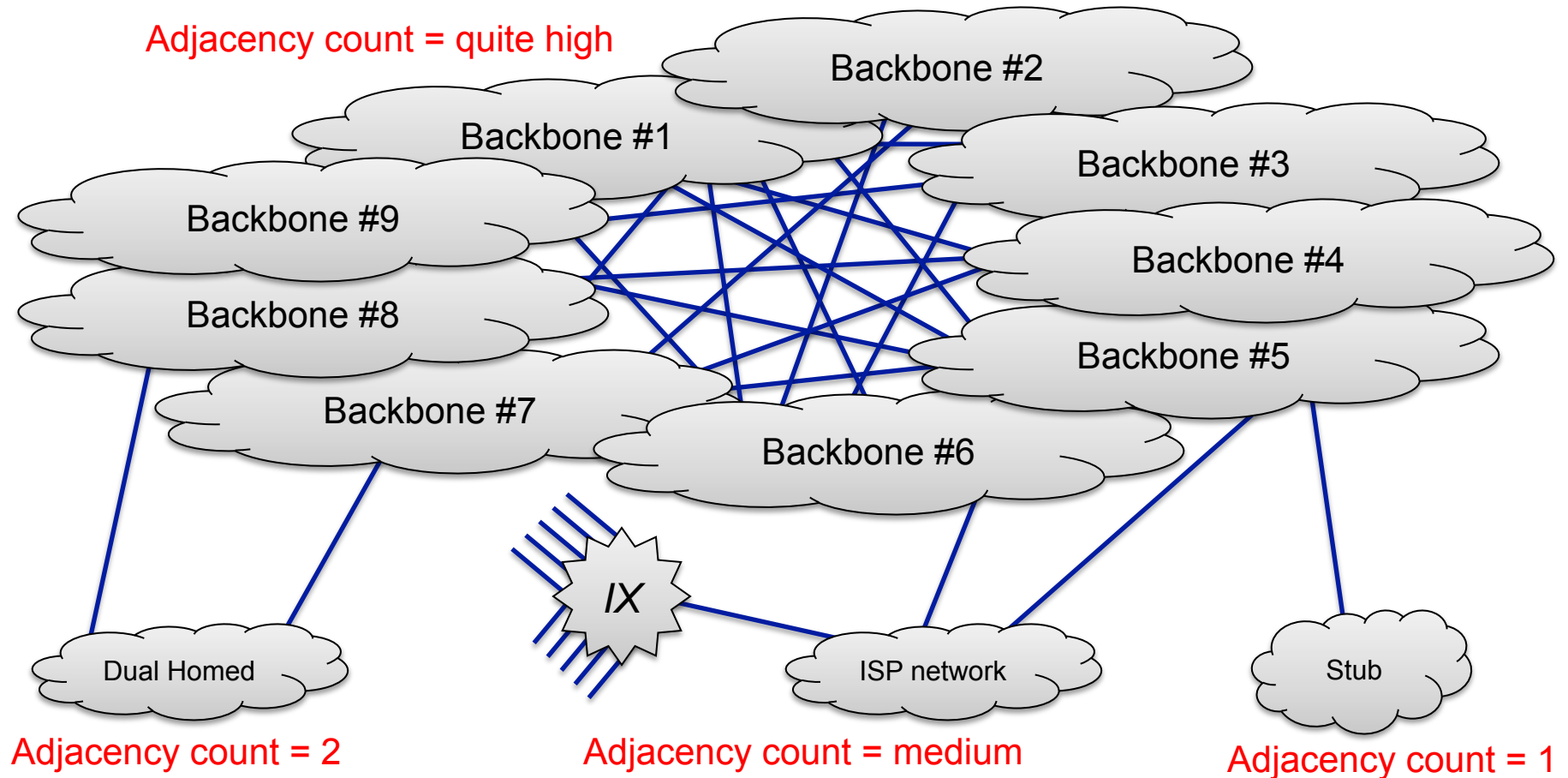
ASes using IPv4 and IPv6: 3673

ASes using IPv4 or IPv6: 37727

Percentage of ASes (IPv4 or IPv6) running IPv6: 10.0%

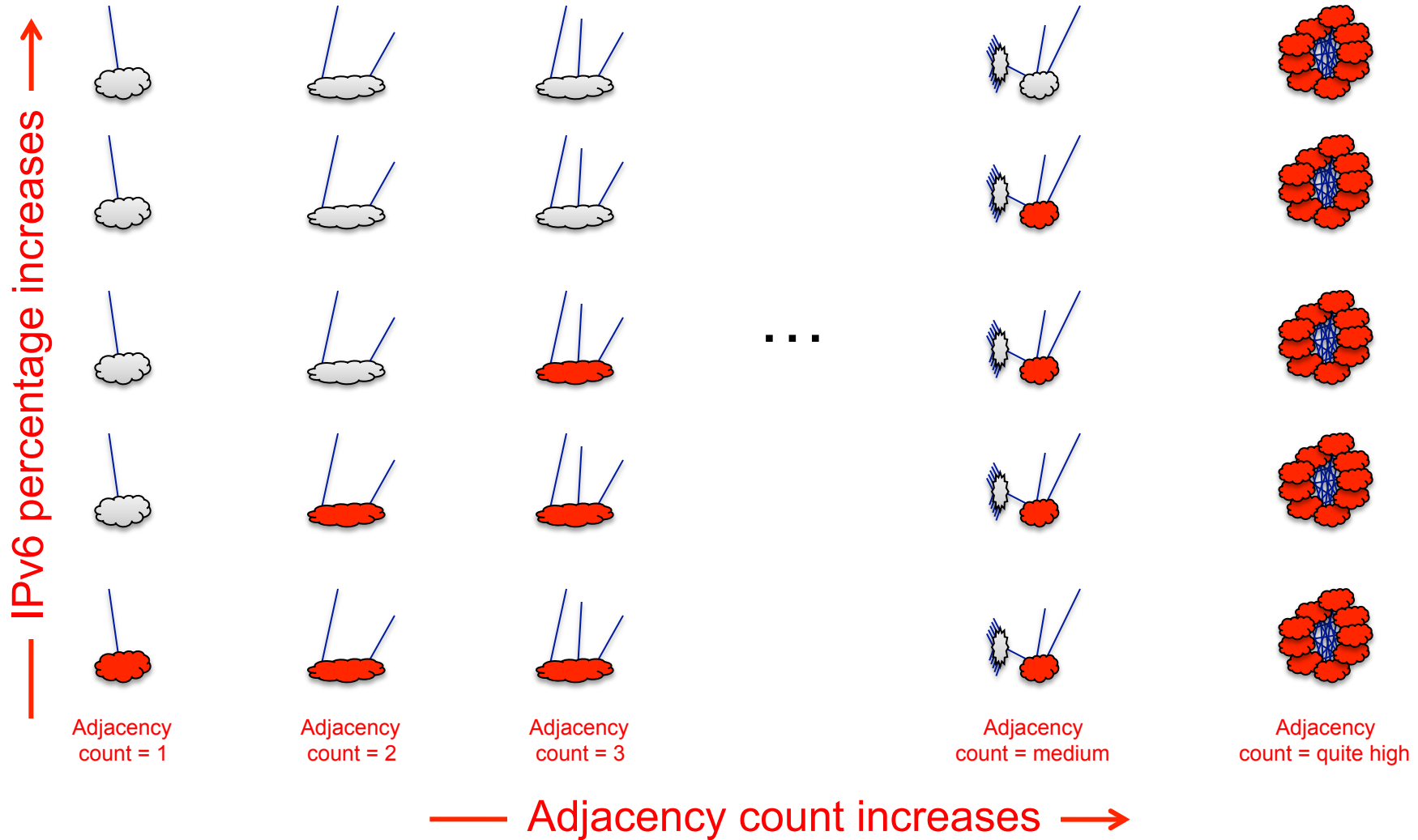


Defining an ASN? Networks are not all equal

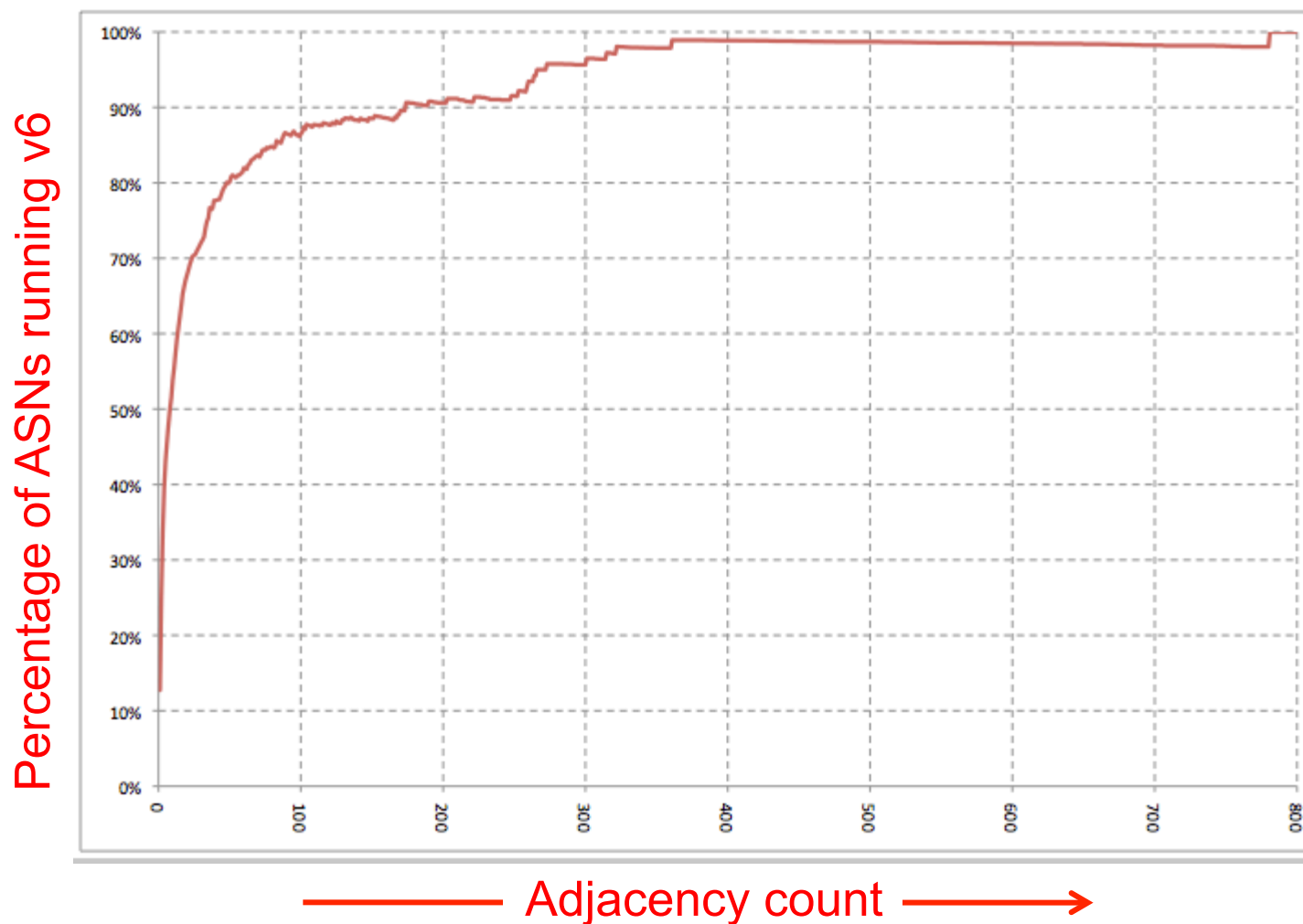


Question: How many operate IPv6 ?

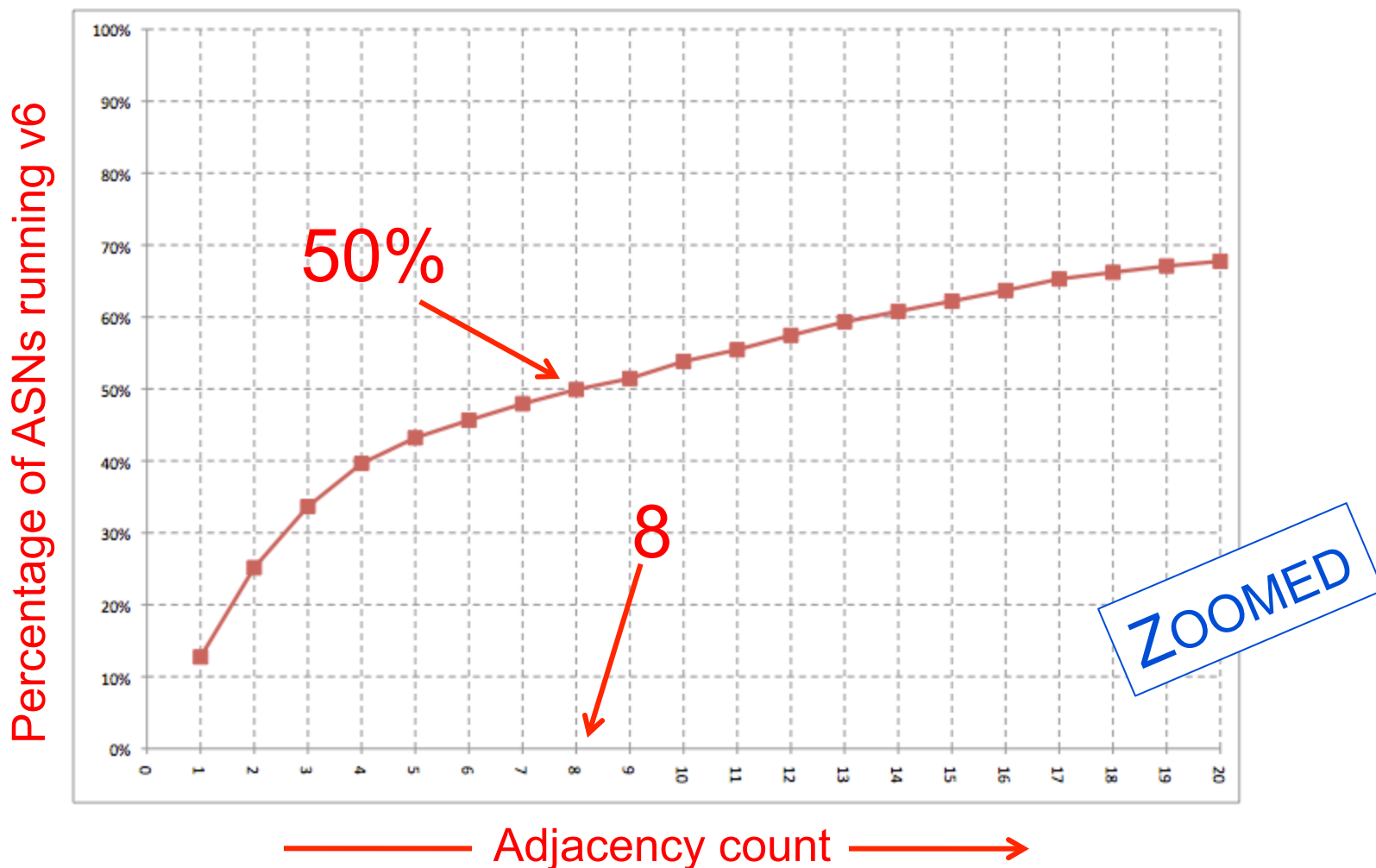
Measuring networks by adjacency count



Around 50% of well connected ASNs run IPv6 *



Around 50% of well connected ASNs run IPv6 *



* What's a well connected network? Does an adjacency-count measure this? Is 8 acceptable?

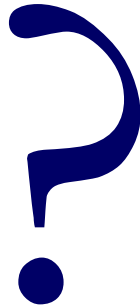
Do 50% of IP Networks run IPv6 ?

YES *

** If you look at medium to well connected networks*



Q&A



Contact:

Martin J. Levy
Director, IPv6 Strategy
Hurricane Electric
760 Mission Court
Fremont, CA 94539, USA
<http://he.net/>

martin at he dot net
+1 (510) 580 4167

